

Drive Shaft / Axle

Front

General Description

Front Drive Shaft Construction

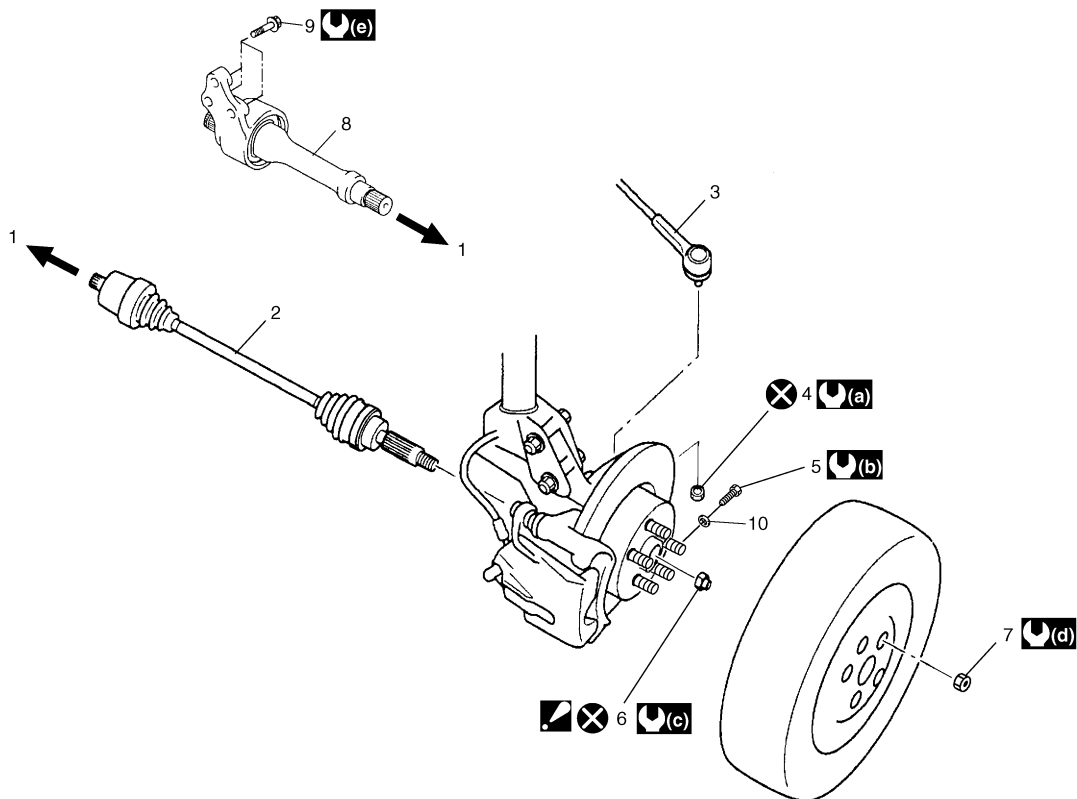
S6RW0C3111001

A constant velocity ball joint is used on the wheel side of both right and left side drive shaft assemblies. A tripod type constant velocity joint is used on the differential side and center shaft side. The drive shaft can slide through the tripod joint in the extension/contraction direction.

Component Location

Front Drive Shaft Assembly Components Location

S6RW0C3113001



I6RW0C311001-01

1. To transaxle	7. Wheel nut	: 200 N·m (20.0 kgf·m, 145.0 lb-ft)
2. Drive shaft assembly	8. Center shaft assembly (if equipped)	: 85 N·m (8.5 kgf·m, 61.5 lb-ft)
3. Tie-rod end	9. Center bearing support bolts (if equipped)	: 55 N·m (5.5 kgf·m, 40.0 lb-ft)
4. Tie-rod end nut	10. Washer	: Do not reuse.
5. Ball stud bolt	: 45 N·m (4.5 kgf·m, 32.5 lb-ft)	
6. Drive shaft nut : After tightening nut to specified torque, caulk nut securely.	: 60 N·m (6.0 kgf·m, 43.5 lb-ft)	

Diagnostic Information and Procedures

Front Drive Shaft Symptom Diagnosis

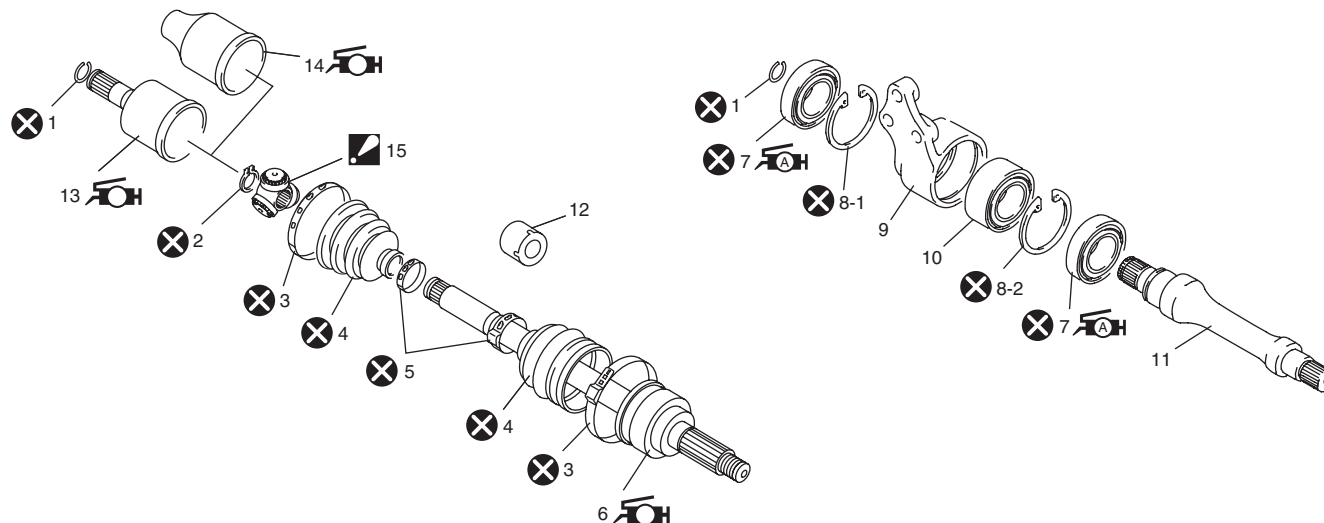
S6RW0C3114001

Condition	Possible cause	Correction / Reference Item
Abnormal noise	Worn or breakage of the drive shaft joint	Replace.
	Worn or breakage of the center bearing	Replace.

Repair Instructions

Front Drive Shaft Components

S6RW0C3116001



I6RW0C311002-01

1. Circlip	9. Center bearing support
2. Snap ring	10. Center bearing
3. Boot band (Large)	11. Center shaft
4. Boot	12. Damper (if equipped)
5. Boot band (Small)	⚙️ 13. Differential side joint (Constant velocity tripod joint) : Apply dark gray grease included in spare part to joint
⚙️ 6. Wheel side joint (Constant velocity ball joint) : Apply black grease included spare part to joint.	⚙️ 14. Center shaft side joint (Constant velocity tripod joint) : Apply dark gray grease included in spare part to joint
⚙️ 7. Oil seal : Apply grease to oil seal lip.	⚠️ 15. Tripod joint spider : Never disassemble
8-1. Center bearing support circlip (M/T model only)	⊗ : Do not reuse.
8-2. Center bearing support circlip	

Front Drive Shaft Assembly On-Vehicle Inspection

S6RW0C3116002

- Check boots for breakage or deterioration.
- Check wheel side joint for rattle or smooth rotation.
- Check differential side (or center shaft side) joint for smooth rotation.

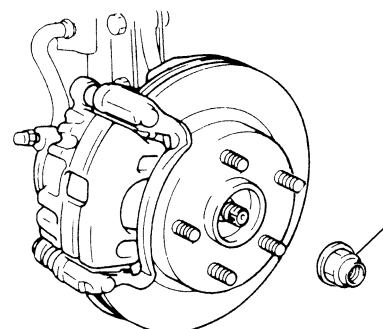
If any abnormality is found, replace.

Front Drive Shaft Assembly Removal and Installation

S6RW0C3116003

Removal

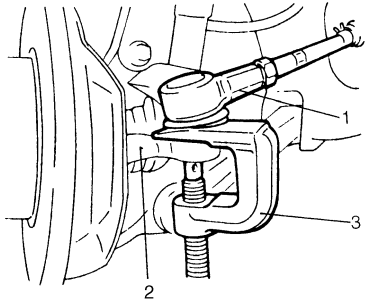
- 1) Hoist vehicle and remove front wheel.
- 2) Undo caulking and remove drive shaft nut (1) with brake pedal depressed.



I6RW0B310005-01

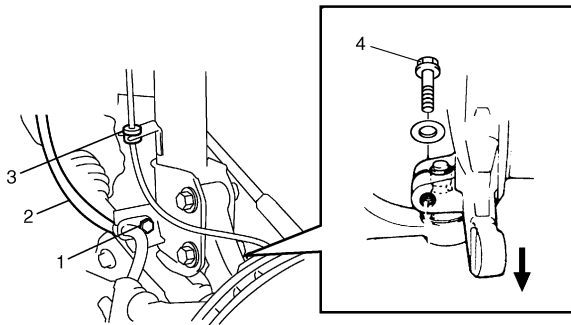
3A-3 Drive Shaft / Axle: Front

- 3) Drain transaxle oil and transfer oil (4WD model).
- 4) Disconnect tie-rod end (1) from steering knuckle (2) using puller (3).



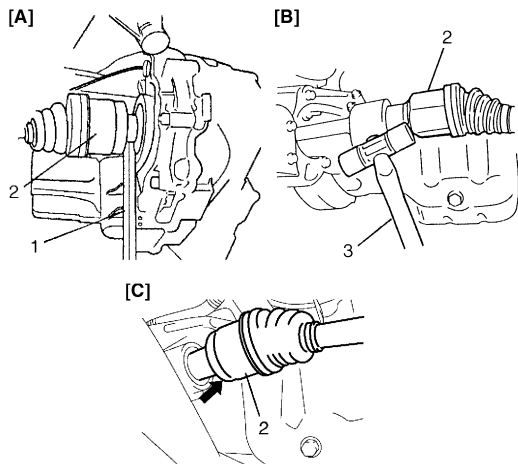
I3RM0A310003-01

- 5) Remove brake hose mounting bolt (1) and brake hose (2) from bracket and then detach wheel speed sensor harness (3) from strut bracket.
- 6) Remove suspension control arm ball joint bolt (4) from knuckle.



I6RW0C311003-01

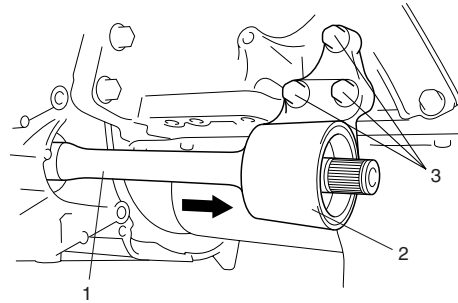
- 7) Disconnect front suspension control arm ball joint stud from steering knuckle.
- 8) Using tire lever (1) or plastic hammer (3), pull out drive shaft joint (2) so as to release snap ring fitting of joint spline at differential side or at center shaft.



I5RW0A311003-01

[A]: Left side shaft	[C]: Right side shaft of 4WD model
[B]: Right side shaft of 2WD model	

- 9) Remove drive shaft assembly.
- 10) Remove center bearing support bolts (3) and remove center bearing support (2) with center shaft (1) from differential side gear.



I2RH01310007-01

Installation

⚠ CAUTION

- Be careful not to damage oil seals and boots when installing drive shaft.
- Do not hit joint boot with hammer. Inserting joint only by hands is allowed.
- Make sure that differential side joint is inserted fully and its snap ring is seated as it was.

Install drive shaft assembly by reversing removal procedure and noting the following points.

- Tighten each bolt and nut to the specified torque referring to "Front Drive Shaft Assembly Components Location".
- Tighten brake hose mounting bolt to specified torque.

Tightening torque

Brake hose mounting bolt: 25 N·m (2.5 kgf-m, 18.0 lb-ft)

- Fill transaxle with oil as specified referring to "Manual Transaxle Oil Change in Section 5B" or "A/T Fluid Change in Section 5A" and "Transfer Oil Change in Section 3C" (4WD model).
- Check toe setting referring to "Front Wheel Alignment Inspection and Adjustment in Section 2B" and adjust as required.