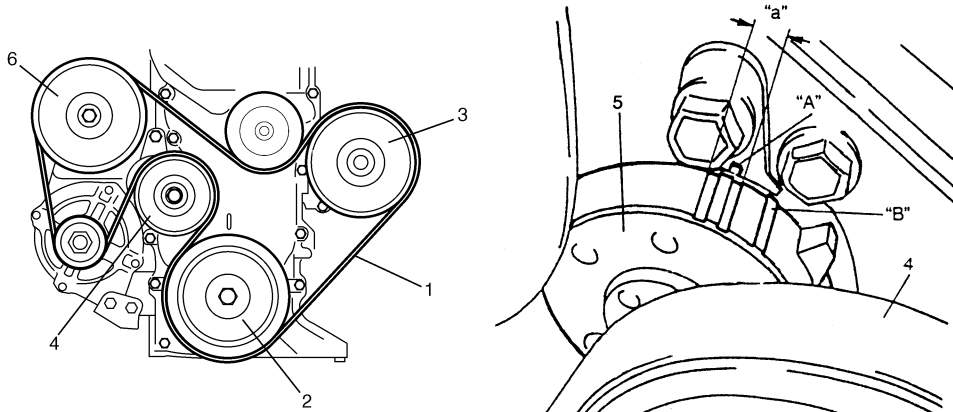


Water Pump and Generator Drive Belt On-Vehicle Inspection

S6RW0C1A06003

- Inspect belt for cracks, cuts, deformation, wear and cleanliness. If any of these conditions are found, replace belt, referring to "Water Pump and Generator Drive Belt Removal and Installation".
- Check to make sure that tension indicators are as follows in the figure by using mirror.
 - a. If the tension indicator "B" is found to the left of the indicator "A", replace the generator belt.
 - b. If new generator belt has been installed, indicator "A" should be within "a" of the figure. If it isn't, it means that belt is not installed properly. Reinstall it properly.



I5JB0A1A0010-01

1. Water pump and generator drive belt	3. Water pump pulley	5. Tensioner
2. Crankshaft pulley	4. Tension pulley	6. Power steering pump pulley

Water Pump and Generator Drive Belt Removal and Installation

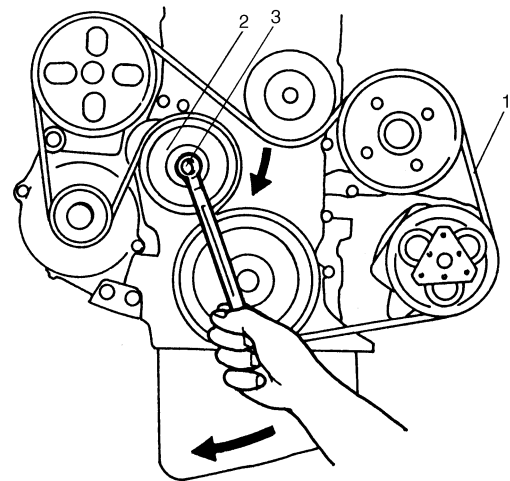
S6RW0C1A06004

Removal

⚠ WARNING

Disconnect negative (-) cable at battery before removing and installing generator belt.

- 1) Hoist vehicle.
- 2) Remove right side engine under cover.
- 3) Loosen tensioner by turning the tensioner pulley (2) clockwise.
- 4) While holding the tensioner and belt loose, remove generator belt (1).



I3TR011A4001-01

3. Tensioner pulley bolt

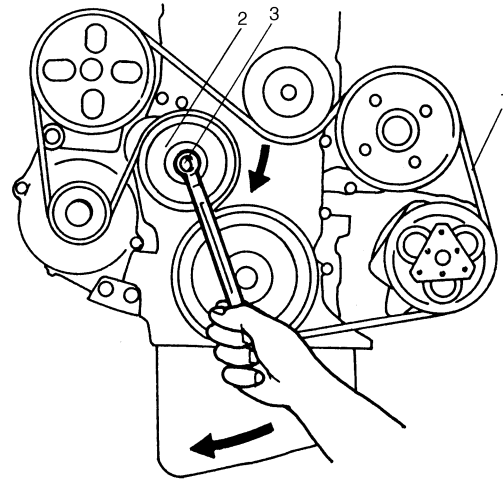
1J-9 Charging System:

Installation

- 1) Loosen tensioner by turning the tensioner pulley (2) clockwise.
- 2) While holding the tensioner, install generator belt (1).
- 3) Install right side engine under cover.

NOTE

- Make sure that the belt fits each pulley's groove properly.
- After installing generator belt, make sure that tension indicator is within standard range referring to "Water Pump and Generator Drive Belt On-Vehicle Inspection".

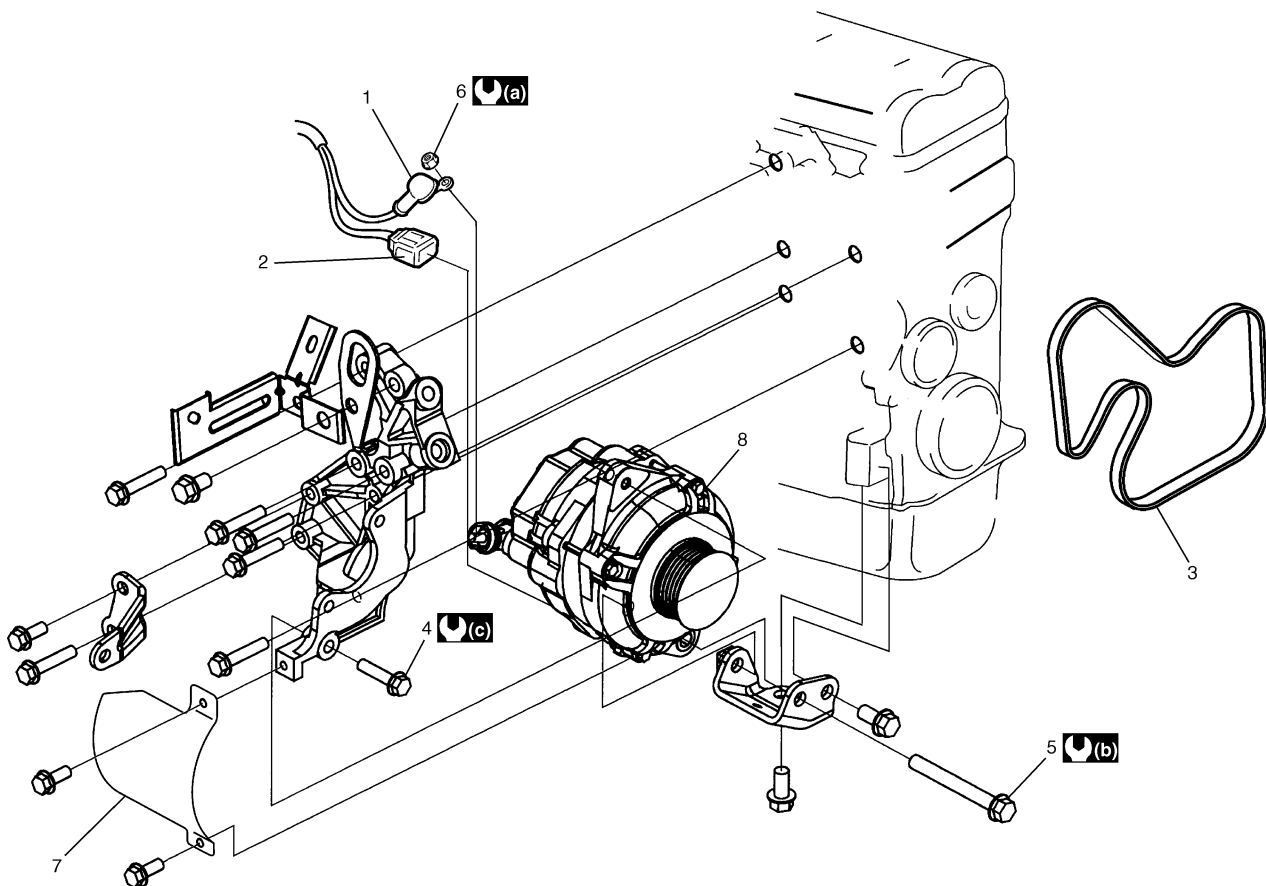


I3TR011A4001-01

3. Tensioner pulley bolt

Generator Unit Components

S6RW0C1A06005



I7RW011A0002-01

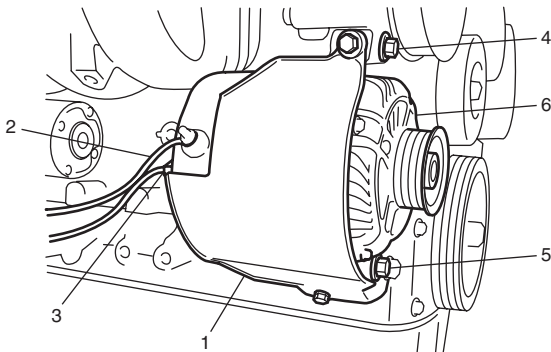
1. "B" terminal wire	5. Generator pivot bolt	Ⓐ : 5.0 N·m (0.5 kgf-m, 4.0 lb-ft)
2. coupler	6. "B" terminal nut	Ⓑ : 52.5 N·m (5.25 kgf-m, 38.0 lb-ft)
3. Water pump and generator drive belt	7. Generator cover	Ⓒ : 25 N·m (2.5 kgf-m, 18.5 lb-ft)
4. Generator mounting bolt	8. Generator	

Generator Dismounting and Remounting

S6RW0C1A06006

Dismounting

- 1) Disconnect negative (-) cable at battery.
- 2) Remove water pump and generator drive belt referring to "Water Pump and Generator Drive Belt Removal and Installation".
- 3) Remove air cleaner case referring to "Air Cleaner Assembly Removal and Installation in Section 1D".
- 4) Remove intake manifold referring to "Intake Manifold Removal and Installation in Section 1D".
- 5) Remove generator cover (1).
- 6) Disconnect "B" terminal wire (2) and coupler (3) from generator.
- 7) Remove generator mounting bolt (4) and generator pivot bolt (5) from generator.
- 8) Remove generator (6) from engine.



I7RW011A0003-01

Remounting

Reverse dismounting procedure, noting the following.

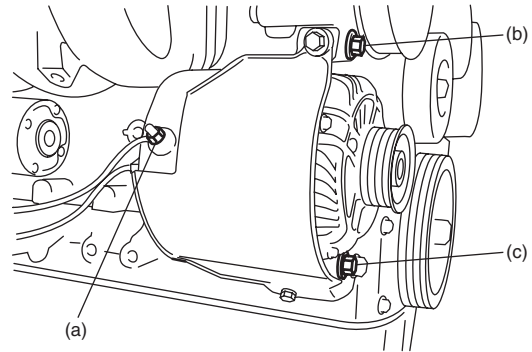
- Tighten each bolts and nuts to specified torque.

Tightening torque

"B" terminal nut (a): 5 N·m (0.5 kgf-m, 4.0 lb-ft)

Generator mounting bolt (b): 25 N·m (2.5 kgf-m, 18.5 lb-ft)

Generator pivot bolt (c): 52.5 N·m (5.25 kgf-m, 38.0 lb-ft)



I7RW011A0004-01